

ENDING CANCER DISPARITIES: FROM AWARENESS TO ACTION

SOCIAL DRIVERS OF HEALTH AND BEYOND

Meghan McKenzie, M.A.
Patient Inclusion & Health Equity
Chief Diversity Office

February 15, 2024

TODAY'S TOPICS



1

Genentech commitments to Advancing Inclusive Research & Health Equity

2

Focusing regionally where disparities are greatest

3

Why SDOH collection in research matters

GENENTECH EMBRACES THE INCREASINGLY DIVERSE WORLD AROUND US

Our mission is to be the industry leader to deliver scientific innovations that drive better outcomes for our **people, patients, business, and communities** by advancing and boldly championing **diversity, equity, and inclusion.**

ADVANCING INCLUSIVE RESEARCH & HEALTH EQUITY COMMITMENT




FOSTERING BELONGING



ADVANCING INCLUSIVE RESEARCH & HEALTH EQUITY



TRANSFORMING SOCIETY



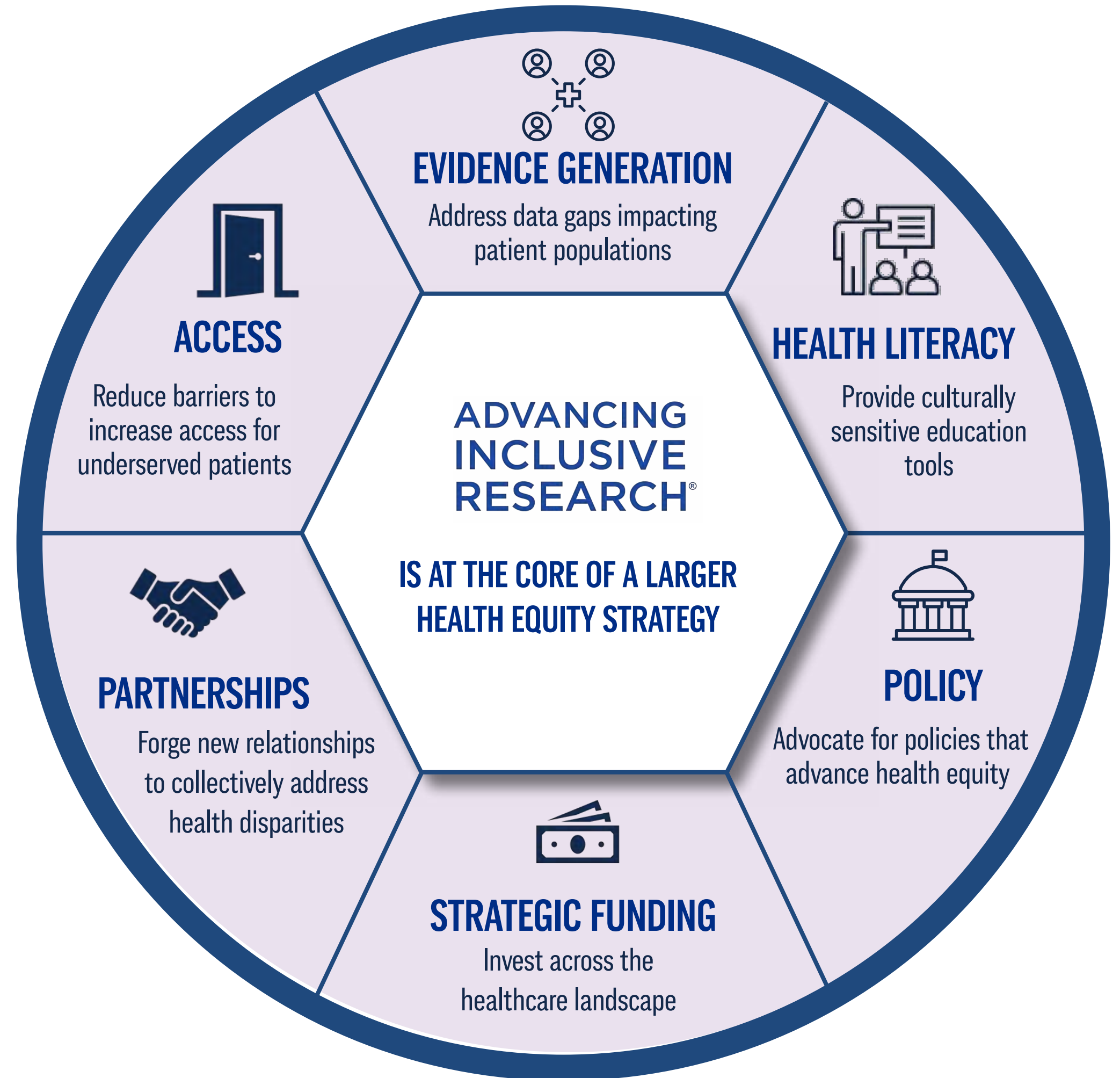
ALL MOLECULE TEAMS include population-specific **assessments and inclusive research action plans**

ESTABLISH GENENTECH AS A **leader and partner of choice** in advancing health equity

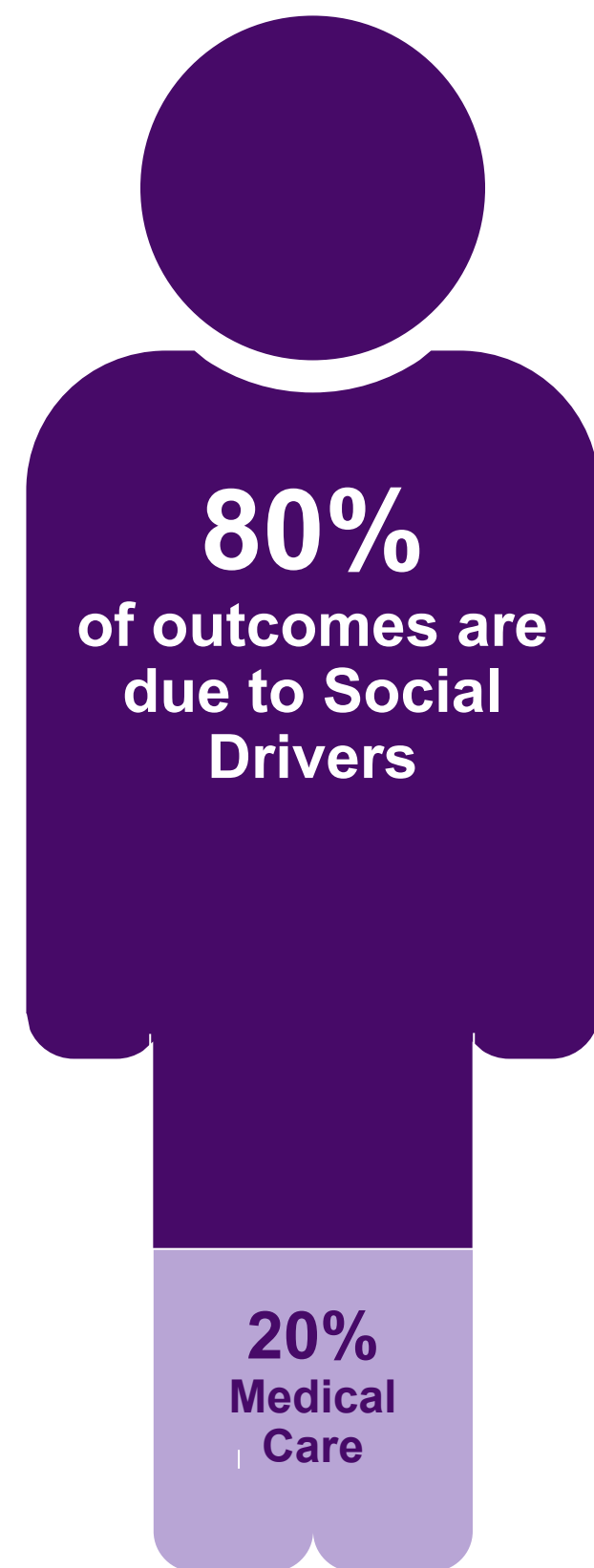
BOLD LEADERSHIP IS REQUIRED

ALWAYS DESIGN WITH PATIENT EQUITY IN MIND

We invest in ground breaking solutions and essential patient support to promote health equity and **create a more diverse future of science**



80% OF OUTCOMES ARE DUE TO SOCIAL DRIVERS OF HEALTH



Affordability

Healthcare, housing, Healthy foods, Employment, Poverty

Education

Early Ed, HS Graduates, language skills, literacy

Social & Community Context

Support, relationships with family, friends, coworkers, and community members

Health & Healthcare

Access to healthcare and health education

Neighborhood & Built Environment

Diet, Crime, Safety where people live, work, and play

References: 1. Hood CM, Genusso KP, Swain GR, Catlin BB. County health rankings. Relationships between determinant factors and health outcomes. *Am J Prev Med.* 2016;50(2):129-135.

2. Social Determinants of Health. HealthyPeople.gov website. Last updated October 27, 2021. Accessed November 8, 2021. <https://www.healthypeople.gov/2020/topics-objectives/topic/social-determinants-of-health>.

CHIEF DIVERSITY OFFICE DRIVING LOCAL IMPACT

GENENTECH'S HEALTH EQUITY REGIONAL SYMPOSIA PROGRAM -2023 IMPACT (LAUNCHED IN 2022)

WHAT

Community-Based Engagement

Sponsor community-based events that focus on healthcare disparities that address local issues and potential solutions to advance health equity



HOW

Convening of Key Stakeholders

Including community leaders, regional & community physicians, patient advocates, patients, and/or government officials to discuss key local and patient barriers to care



IMPACT

In 2023, we conducted:

52 PROGRAMS across
CITIES in
26 STATES & 2 US
Territories



We reached more than:

7,000 attendees
representing dozens of
diverse healthcare roles



REACHING LOCAL COMMUNITIES WITH THE FIESTA FAIR

PASADENA, TEXAS

Healthcare is delivered locally, and trusted community partners are key to reaching underserved patients

- The **Fiesta Fair** was organized by **Dia De La Mujer Latina** and **500+** attendees participated.
- **Prevent Blindness of Texas** conducted **vision screenings** and educated participants to understand their individual risk factors.
- **Genentech** shared information about MS, diabetic eye disease, the importance of cancer screenings plus how to access **Genentech Patient Foundation** for free medications with **155 participants**.



Cuide Sus Ojos

Su visión es importante si tiene diabetes. ¡Prevenir la pérdida de la visión debe ser una **PRIORIDAD!** Siga leyendo para conocer los 5 pasos para prevenir la pérdida de la visión debido a la diabetes:

- 1** – Manteniendo los niveles de glucosa bajo control
- 2** – Controlando la presión arterial
- 3** – Manteniendo niveles saludables de colesterol
- 4** – Buscando ayuda para dejar de fumar
- 5** – Haciendo una cita con un oculista anualmente



ENGAGING WITH NATIONAL MINORITY QUALITY FORUM TO REACH UNDERSERVED COMMUNITIES



FLINT, MICHIGAN | 30 August 2023

National Minority Quality Forum and National and Local Health Partners Provide Free Cancer Screenings and Promote Education at Annual Flint Northern High School Reunion Tailgate

NMQF works with stakeholders to improve the delivery of care to diverse populations



Mistrust in the System and Engaging Communities of Color



Genentech Exhibit at NMQF Cancer Screening and Health Fair in Flint

LOVE LETTERS

A COMMUNITY CANCER SCREENING CAMPAIGN TO INCREASE SCREENING RATES AMONG BLACK AND LATINA WOMEN



“Love Letters”
creates awareness
of the importance of
screening across
communities and
addresses health
equity



Black and Latina women wrote **letters to loved ones** they had lost to cancer or who are survivors of cancer.

Black and Latino artists drew portraits honoring the woman the letter is addressing.

Real stories create meaningful connections and break through barriers that may prevent screening.

LoveYouGetScreened.com

2024: GROUNDSHOTS TO MOONSHOTS



Working with the American Cancer Society

Advancing equity by addressing cancer injustice with solutions to bring access to high-quality care for everyone.

PATIENT NAVIGATION

Lead sustainable national and community-level tactics to address social drivers of health through screening and referrals.

COMMUNITY ENGAGEMENT

Advance capabilities in community-based organizations to meet the SDOH needs of patients that improve cancer outcomes.

PUBLIC POLICY

Drive public policy change for equitable access to care for all cancer patients across state, federal and regulatory arenas.

ADDRESSING SDOH THROUGH PARTNERSHIPS TO BETTER SUPPORT PATIENTS

HEALTH EQUITY GRANTS: “RESILIENCE EFFECT”



IMPACT

Genentech has invested more than **\$25 million** into this effort.

The Resilience Effect has reached more than **160,000** low-income San Francisco Bay Area children.

California has scaled the Adverse Childhood Experiences (ACEs) model to more than **500,000** families.

COMMUNITY HEALTH JUSTICE FUND

The **Community Health Justice Fund** is a **\$6 million** commitment to **community-based organizations** to improve the health of their communities.

Genentech is **amplifying the capacity of organizations** to improve the conditions that impact community health and well-being through a racial justice lens.

10 GRANTEE ORGANIZATIONS



INDIVIDUAL GRANTS BETWEEN

\$60-235K PER YEAR

Learn more at: <https://www.gene.com/stories/community-health-justice-fund>

RISE TO HEALTH COALITION

Founding Supporter of campaign to create an actionable national health equity strategy

- Coalition **works across sectors** to build capacity, shift policies, and change mindsets within healthcare around equity and racial justice.
- Equip **100,000 individual practitioners** and **250 health care organizations** to build a healthcare system where all patients and staff feel respected and empowered.

RISE TO HEALTH COALITION

Together, we can create health care that cares for all of us.

Founding collaborators of the Rise to Health Coalition

Institute for Healthcare Improvement
 AMA AMERICAN MEDICAL ASSOCIATION
 race forward
 GROUNDWATER INSTITUTE

PolicyLink
 American Hospital Association™ Advancing Health in America
 NATIONAL ASSOCIATION OF COMMUNITY HEALTH CENTERS
 HEALTH BEGINS

CMSS Council of Medical Specialty Societies
 AHIP Guiding Greater Health

We gratefully acknowledge the following organizations for their generous funding support of the Coalition:

Genentech A Member of the Roche Group
 The Commonwealth Fund
 Institute for Healthcare Improvement
 AMA AMERICAN MEDICAL ASSOCIATION

ACHIEVING DIVERSE ENROLLMENT, ONE STUDY AT A TIME

EMPACTA

EMPACTA enrolled 389 participants
In less than one month —
84% from underrepresented groups

A Phase III Actemra study for
hospitalized patients with
COVID-19 pneumonia

CHIMES

CHIMES enrolled 150 Black or
Hispanic/Latino patients ten weeks
ahead of schedule

A Phase IV study for
Black/African American and
Hispanic/Latino patients with
**relapsing-remitting multiple
sclerosis**

ELEVATUM

ELEVATUM enrolled 124 patients one
month ahead of schedule

A Phase IV study for
Black/African American,
Hispanic/Latino, American
Indian and Pacific Islander
patients with **diabetic
macular edema**

CATORI

CATORI is gaining insights about
healthcare experiences for American
Indians or Alaska Natives

An observational study to define
current care pathways for
American Indian and Alaska
Native patients requiring
specialty care

De-Centralized Trial Methods

SNAPSHOT: AIR ALLIANCE SITES ENROLL A MORE DIVERSE POPULATION, FASTER

ADVANCING INCLUSIVE RESEARCH®
SITEALLIANCE

**~2X
FASTER
ENROLLMENT OF
BLACK &
HISPANIC/LATINX
PATIENTS THAN
OTHER SITES ON
THE SAME
STUDIES^{1,2,3}**

6 ONCOLOGY Sites:

Deliver a patient population
80% more diverse
than their study peers^{2,3,4}

Are the **sole recruiter** of
Black and/or Latino patients in
~1/5 of studies^{2,4}

3 OPHTHALMOLOGY Sites:

Deliver a patient population
48% more diverse
than their study peers^{2,3,4}

Enroll Black & Hispanic/Latinx
Patients **twice as fast**
as their study peers^{2,3,4,5}

¹Mean Enrollment rate of Diverse Patients at AIR Site Alliance Sites=.09 patients per site per month (ppspm), Mean Enrollment Rate of non-AIR SA Sites Overall=.04 ppspm; data rounded to two decimal points

²Source: RGNE Data Capture Hub (ECD and CTMS); scope of assessment is n=67 (48 in Oncology, 19 in Ophthalmology) studies; all data reflects US performance only regardless of if a study is international; **Data accurate as of January 8, 2024**

³Diverse patients = patients with any combination of Black or Hispanic identity / heritage (e.g., Black- Hispanic; White-Hispanic; Black non-Hispanic, etc.); Figure represents the difference in percentage of 'diverse' patients enrolled vs. percentage of 'non-diverse' patients; Asian, Native American and other race/ethnicities excluded from analysis; one patient is only counted once in this algorithm; multi-racial, non-Hispanic patients are excluded due to inability to determine ethnicity

⁴Among studies and US sites in the data set

⁵Median enrollment rate of diverse patients at Ophthal sites =.12 ppspm, Non-AIR Sites =.06 ppspm

CO-CREATING WITH SITES TO IMPROVE REPRESENTATION

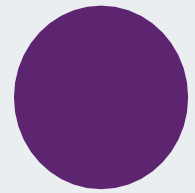
Patient Education Videos



HCP Videos: *Why Advancing Inclusive Research Matters*

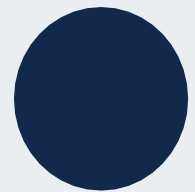


COLLECTING SDOH IN STUDIES IS IMPORTANT



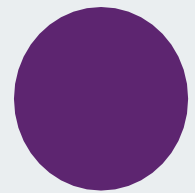
Drives Innovation

Collecting SDOH information of study participants can help identify patients at risk of poorer outcomes, and for whom we can create innovative strategies



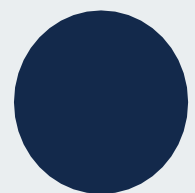
Collecting Impact on Patient Experience

During a study, patients may need help with **healthcare resources, transportation and social support**. SDOH may impact patient's ability to enter or stay in a study.



Understand Patient Reluctance

Social drivers, such as **distance to the study site, lack of insurance, and/or low income, may** deter patients from studies. We need to identify where community needs are so we can **close care gaps**.



Patient Safety

SDOH may identify if there are any safety differences for **our medicines** in underserved populations

SDOH: LGBTQ+ HEALTH INEQUITY & SOGI Collection

WHY COLLECTING SEXUAL ORIENTATION AND GENDER IDENTITY (SOGI) IS IMPORTANT

LGBTQ+ people experience significant health disparities

Increased incidence of some cancers and other conditions ²
Concerns with access to health care professionals who understand LGBTQ+ needs ³
Lower average life expectancy in transgender community ^{1, 26}

NIH ⁴ and Institute of Medicine ⁵ recommend collecting SOGI

Recommends collecting SOGI in clinical trials and electronic health records
NIH adds questions about sexual attraction, behavior, identity, or gender identity and expression to demography collection in studies¹⁷

SOGI Collection in practice

We cannot measure access to our studies for LGBTQ+ communities without collecting SOGI.
Genentech Patient Foundation & studies collect SOGI now.
Some sites collect SOGI in clinic now.

1. <https://jamanetwork.com/journals/jamanetworkopen/fullarticle/2800814>
2. <https://acsjournals.onlinelibrary.wiley.com/doi/full/10.3322/caac.21288>
3. <https://jamanetwork.com/journals/jama/fullarticle/1104294>
4. <https://grants.nih.gov/grants/guide/notice-files/NOT-OD-20-032.html>
5. <https://www.ncbi.nlm.nih.gov/books/NBK64806/>

KEY TAKEAWAYS

Focus on the most underserved and vulnerable populations with the biggest disparity in outcomes.

Understand barriers locally, co-create solutions that are sustainable, and share what is working with others.

Provide education on clinical studies, collect optional SDOH and SOGI data, and share best practices with each other

*“The future never
just happened.
It was created.”*



MAE JEMISON, MD
Astronaut

Thank you!

Meghan McKenzie
mckenzie.meghan@gene.com